

radii plus

HIGH POWERED CORDLESS LED CURING LIGHT

KABELLOSES LICHTPOLYMERISATIONSGERÄT MIT LED-TECHNOLOGIE

FOTOPOLIMERIZADOR LED SEM FIO DE ALTA ENERGIA

UNIDAD LED FOTOCURADO INALAMBRICA DE ALTA POTENCIA

LAMPE À PHOTOPOLYMERISER SANS FIL DE HAUTE PUISSANCE À TECHNOLOGIE LED

LAMPADA FOTOPOLIMERIZZATRICE AL LED SENZA FILI

HIGH POWER DRAADLOOS LED POLYMERISATIELAMP

STÆRK LEDNINGSFRI LED HÆRDELAMPE

TRÅDLØS HERDELAMPE MED HØY EFFEKT

SLADDLÖS LJUSHÄRDNINGSLAMPA MED HÖG EFFEKT

ΥΨΗΛΗΣ ΙΣΧΥΟΣ ΦΩΣ ΦΩΤΟΠΟΛΥΜΕΡΙΣΜΟΥ LED,
ΧΩΡΙΣ ΚΑΛΩΔΙΟ

BEZPRZEWODOWA LAMPA POLIMERYZACYJNA LED O WYSOKIEJ MOCY

TUGEVA VÕIMSUSEGA JUHTMEVABA LED LAMP

JAUDĪGA BEZVADU DIOŽU POLIMERIZĀCIJAS LAMPĀ

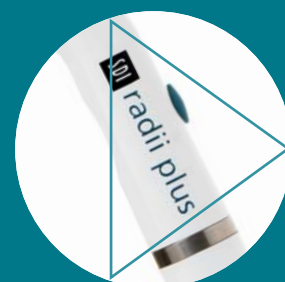
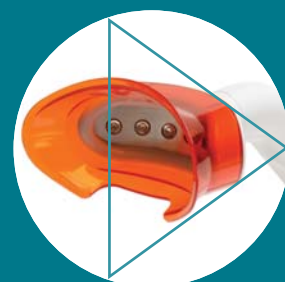
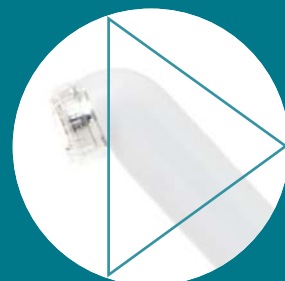
DIDELIO GALINGUMO BELAIDĖ DIODINĖ KIETINIMO LEMPA

VYSOCE VÝKONNÁ LED POLYMERACNÍ LAMPĀ

YÜKSEK LED GÜÇLÜ KABLOSUZ IŞINLI CİHAZ

高出力コードレスLED重合ライト

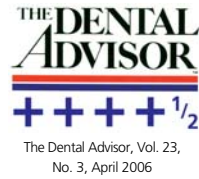
強力無線LED冷光筆



SDI

radii plus

not just a powerful
LED curing light



Curing? Whitening?
Transilluminating? The Radii Plus does it all. The amazing transformation takes place with a simple pull and click of the LED attachment. It's unique, easy to upgrade design, provides unlimited potential making it the best investment you will ever make!

> Basic features

High intensity - 1,500mW/cm²

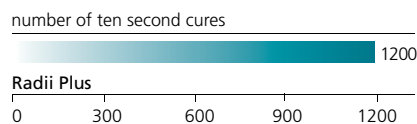
The higher the intensity, the more the light penetrates to efficiently cure the restorative.

Simple to replace parts

Designed with snap-in or screw in connections, each part of the Radii Plus including the battery is easy to remove and replace.

Recharging

The Radii Plus does not need to be constantly recharged. Its can be used for 1200 ten second cures with just one charge.



Cordless

The Radii Plus is a cordless unit allowing complete freedom of movement and total control.

No noisy fan

Unlike other LED lights, the Radii Plus does not require a fan. It uses heat sink technology to reduce the amount of heat emission.

Infection control

Perfectly fitted disposable barrier sleeves prevent cross contamination.

Built in radiometer

The Radii Plus' built-in radiometer provides a simple test to ensure the functionality of the light.

Lightweight - 177g

The standard Radii Plus' ergonomic and lightweight design minimises user fatigue and maximises comfort.

Rotatable head

The head of the Radii Plus can be easily turned 360° to what ever position required. Upper quadrants are simple to access.

Slimline design

The small tip and slimline design of the Radii Plus allows users to have easy access to the posterior area. This is particularly beneficial when treating children.

> Curing



Contra angle standard LED attachment

Right angle standard LED attachment

Orthodontic LED attachment

Ramp mode (soft start)*

You have a choice. The Radii Plus is initially set up without a ramp. When the ramp mode is selected, the Radii Plus' light output power gradually increases during the first 5 seconds.

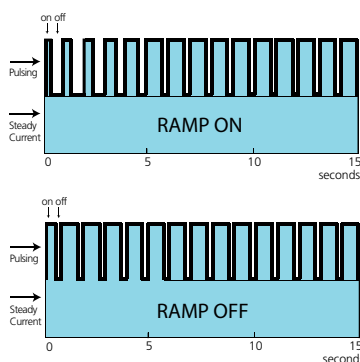
This minimises polymerisation stress

in the restoration. To switch between modes, hold down the on/off button until audio beeps are heard. A blue light comes on when the ramp mode is activated.



Pulse technology

Using a combination of pulse technology and steady current, the Radii Plus can achieve a higher light output without generating excess heat.



5 year warranty**

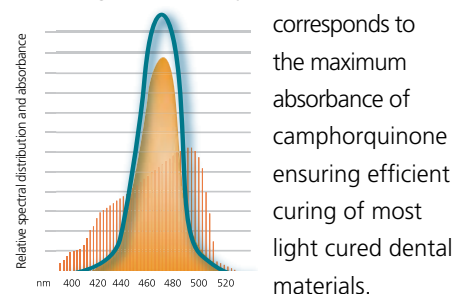
The Radii Plus' robust and reliable construction assures your investment is long lasting. The standard Radii Plus unit has a 5 year warranty. The battery section has a 2 year warranty.

Depth of cure

Radii Plus' up to 6mm depth of cure enables more complete curing of the restoration. This ensures interfacial adaptation and longevity of the restoration.

Efficient energy use

The light emitted by the Radii Plus



corresponds to the maximum absorbance of camphorquinone ensuring efficient curing of most light cured dental materials.

Optional tacking tip

Autoclavable tacking tips (1mm and

2mm openings) are available for veneer procedures. Simply place over the lens cap.



> In-office whitening



The single tooth and full arch bleaching LED attachments are designed for use as an adjunct to in-office tooth whitening systems such as Pola Office+.

No UV emissions

Unlike many other bleaching lights on the market, the Radii Plus Bleaching LED attachments do not emit any harmful ultraviolet light.

Unlimited number of uses

Whilst some other companies require the purchase of a special in-office whitening system for use with their light, the Radii Plus is suitable for use with most whitening products.



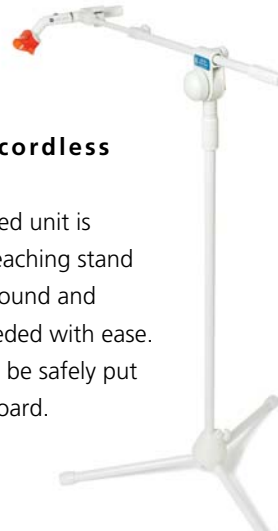
Full Arch Bleaching LED attachment



Single Tooth Bleaching LED attachment

Lightweight, cordless and compact

When the assembled unit is attached to the bleaching stand you can move it around and position where needed with ease. The entire unit can be safely put away in your cupboard.



Safe heat emissions

Some bleaching lights on the market emit high temperatures that may cause pulpal necrosis. The Bleach Arch LED attachment emits a safe temperature of $37^{\circ}\text{C} \pm 2^{\circ}\text{C}$ and the single tooth bleaching attachment will heat to $45^{\circ}\text{C} \pm 2^{\circ}\text{C}$.

> Transillumination



The diagnostic LED attachment lights up those hard to see clinical problems that traditional examination procedures can not. It employs a non-invasive technique and is a must have for all dental practices.

Early detection

The Radii Plus diagnostic LED attachment emits a safe white light which passes through tooth structure. A healthy tooth has an index of light transmission greater than that of decay or calculus. The diagnostic attachment is a great tool to assist you with early caries management.

Safe

The Radii Plus diagnostic LED attachment is ideal for patients who are not suitable for radiographs.

Adjustable brightness

Depending on your requirements, brightness of the light can be altered from high to low by holding down the on/off button.

Optional diagnostic adapter tip

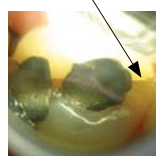
Should a finer beam of light be required to illuminate sites where access is difficult, an adapter tip is also available. Simply replace the lens cap with this adapter.



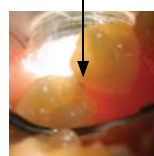
Easily identify:

- Cracked tooth syndrome
- Depth of a subgingival fracture
- Subgingival calculus
- Interproximal decay
- Caries, where the radiographic image is questionable
- Caries removal within a new preparation
- Hidden root canal openings
- Non-vital teeth
- Leaking restorations
- Root tips in surgical extractions

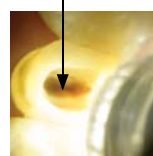
Fracture line



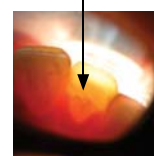
Interproximal decay



Canal opening



Fracture line



Internal fracture



> Summary of LED attachments available

LED attachment type	Indications	Program	Wave length	Warranty
 <p>Contra angle standard LED attachment (comes standard in kit)</p>	<ul style="list-style-type: none"> Light curing at contra angle similar to a hand piece 	<ul style="list-style-type: none"> Run time: 1 minute Beeps every 10 seconds 	440~480nm	5 years
 <p>Right angle standard LED attachment</p>	<ul style="list-style-type: none"> Light curing at right angle 	<ul style="list-style-type: none"> Run time: 1 minute Beeps every 10 seconds 	440~480nm	5 years
 <p>Orthodontic LED attachment</p>	<ul style="list-style-type: none"> Light curing specifically for orthodontic use 	<ul style="list-style-type: none"> Run time: 5 minutes Beeps every 10 seconds 	440~480nm	5 years
 <p>Diagnostic LED attachment</p>	<ul style="list-style-type: none"> Detection of cracks, fractures, calculus, decay, caries, root canal openings, non-vital teeth, leaking restorations and root tips 	<ul style="list-style-type: none"> Run time: 5 minutes 	400~750nm	5 years
 <p>Full arch bleaching LED attachment</p>	<ul style="list-style-type: none"> In-office whitening of upper and lower arch Vital and non-vital whitening procedures 	<ul style="list-style-type: none"> Run time: 8 minutes Beeps every minute 	440~480nm	2 years
 <p>Single tooth bleaching LED attachment</p>	<ul style="list-style-type: none"> In-office whitening of one tooth at a time Vital and non-vital whitening procedures. 	<ul style="list-style-type: none"> Run time: 30 minute Beeps every 30 seconds 	440~480nm	5 years

radii plus

Radii Plus LED curing light 5600052

- 1 x handpiece
- 1 x charger
- 1 x multi-region plug pack
- 100 x barrier sleeves
- 3 x lens caps
- 5 x light shields

LED Attachments

- Full Arch Bleaching LED attachment kit (inc. control section) 5600057
(for use on Radii Plus units with serial numbers below 3-34900)
- Full Arch Bleaching LED attachment
 - 1 x control section
 - 2 x light shields
 - 50 x barrier sleeves

- Full Arch Bleaching LED attachment kit 5600092
(for use on Radii Plus units with serial numbers above 3-34900)
- Full Arch Bleaching LED attachment
 - 2 x light shields
 - 50 x barrier sleeves

- Diagnostic LED Attachment 5600068
(for use on Radii Plus units with serial numbers above 3-21745)
- Orthodontic (Ortho) LED attachment 5600059
 - Right angle standard LED attachment 5600060
 - Contra angle standard LED attachment 5600076
 - Single tooth Bleaching LED attachment 5600058

Accessories and replacement parts:

- Radii Plus replacement lens caps (25 pack) 5600054
- Radii Plus barrier sleeves (1000 pack) 5600055
- Radii Plus light shield (5 pack) 5600056
- Radii Plus replacement battery pack 5600062
- Radii Plus control section 5600061
- Radii Plus charger and plug pack 5600065
- Bleach arch stand 5600095
- Bleach arch barrier sleeves (50 pack) 5600093
- Bleach arch light shield (5 pack) 5600094
- Diagnostic Adapter Tip 5600078
- Tacking Tips set (1mm and 2mm openings) 5600079

Technical data for standard Radii Plus unit.

Handpiece (battery, control section and contra angle standard LED attachment)

- wavelength range: 440 nm – 480 nm
- peak wavelength range: 460 nm
- RAMP mode elapsed time to full intensity: 5 seconds
- light intensity: 1500 mW/cm² (peak)
- duration of continuous use:
 - NO RAMP mode: 60 seconds
 - RAMP mode: 65 seconds
- total continuous run time with fully charged battery: 3 hours 20 minutes
- dimensions: 22mm diameter x 243mm long
- weight: 177g / 6.2 ounces
- battery: 2 x 4.2V Lithium Ion – 1400 mAh

Multi-region plug pack

- AC input: 100-240V ~ 1.0A, 50 - 60 Hz
- DC output: 12V, 1.5A & 15W Max
- dimensions (not including region pins): 38mm high x 45mm wide x 70mm long
- weight: 104g / 3.65 ounces

Charger

- time to charge battery: 60 – 180 minutes
- operating temperature: 10°C - 40°C
- total height with handpiece inserted: 255mm
- dimensions: 70mm wide x 40mm high x 130mm long
- weight: 84g / 3 ounces



LED Radiometer 5600028

The Radii Plus unit already comes with a built-in radiometer. A separate unit, the LED Radiometer is also available to provide an instant digital reading. The unit is specially calibrated for any LED curing light.



* Not applicable to orthodontic LED attachment

** Please refer to the chart for the warranty of optional LED attachments.



Made in Australia by SDI Limited
 Bayswater, Victoria 3153
 Australia 1 800 337 003
 Austria 00800 022 55 734
 Brazil 0800 770 1735
 France 00800 022 55 734
 Germany 0800 100 5759
 Ireland 01 886 9577
 Italy 800 780625
 New Zealand 0800 734 034
 Spain 00800 022 55 734
 United Kingdom 00800 022 55 734
 USA & Canada 1 800 228 5166
 www.sdi.com.au

